

MIM METALLIMPRESS

STEEL
PRODUCTION



About Company

The Limited Liability Company Scientific and Production Company Metallimpres is one of the largest Russian contractors in the area of design and construction of industrial and warehouse and commercial real estate.

Since 1998 LLC NPF Metallimpres has possessed its own steel structures making plant.

The plant is equipped with all the necessary equipment and its own production facilities which allow to carry out orders for design, production and assemblage of steel structures of any complexity and volume at high technology level and in shortest time.

Steel Structure plant in the [manufacturers' catalog of Steel Construction Development Association](#).

About Company

The plant is located in Dudenevskoe highway 9a, Bogorodsk city, Nizhny Novgorod region.

Within 2,7 ha site area there are:

- 2 production buildings of 4000 m², equipped with four paint spray booths, CNC machines, plasma cutting, a drilling machine, a shot blasting room;
- administrative building, including a NDT laboratory (ultrasonic testing);
- warehouse of rolled steel for 1000 tons.



The steel production plant, Bogorodsk



Advantages of work with us

- Full range of works:
 - Design of steel structures (Steel Structures и Steel Structure Detailed Design)
 - Production of metal structures of any complexity
 - Installation of metal structures
- Own design team allows for any customer requirements, as well as to make quick changes of the design documentation.
- Using the most modern equipment, materials and technologies in the production of steel structures.
- Continuous monitoring of the quality and safety of the production process.



Products

The plant produces both skeletons of buildings and structures, as well as some elements of metal constructions:

- tie beams and trusses;
- columns, hammer beams, tie spacers;
- non-uniform beams;
- built-up beams;
- crane runway beams;
- balusters and spandrel beams;
- bridge boards, railings, stairs;
- fire-escape stairs, fire points;
- racks, road safety barriers;
- advertising towers.

Production is carried out both on customer's drawings, and on the basis of drawings and calculations developed by the design team of the LLC NPF «Metallimpress» on the instructions of the customer.



Use

The produced metal structures used in construction of:

- production and technological buildings;
- warehouses;
- office buildings;
- sports and cultural facilities;
- bridge structures;
- structures of special purpose.

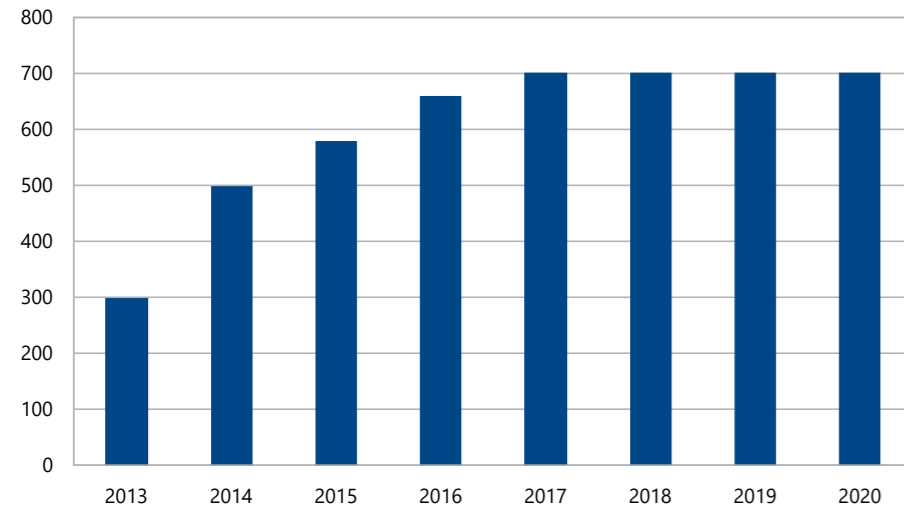


Product Release Plan

The plant has capacity of 8 400 tons per year.

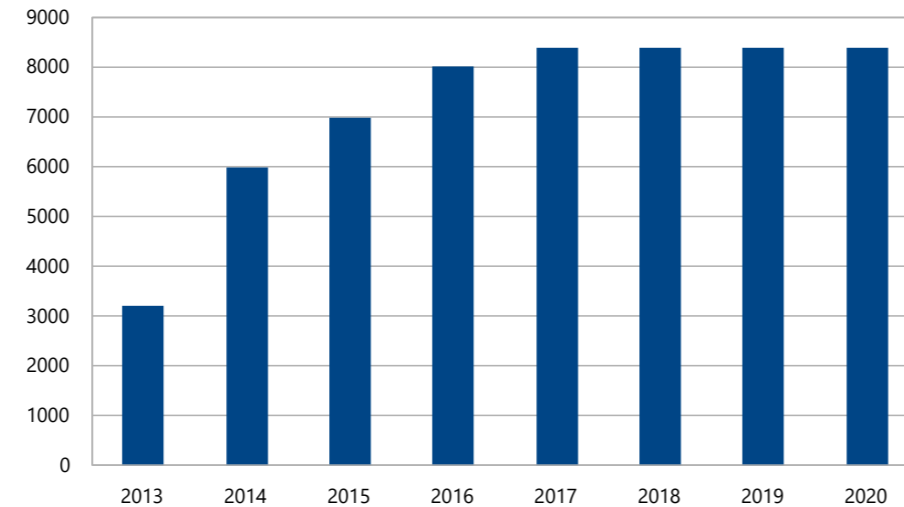
700 TONS
OF STEEL STRUCTURES
PER MONTH

Per month



8 400 TONS
OF STEEL STRUCTURES
PER YEAR

Per year



Quality Control

The quality management system covers all kinds of activities in the production of steel structures and is a means of ensuring compliance of the products with the requirements.

In the production the conventional rolled stock and modern profiles of different sections are used, those allow, in some cases, alleviate the weight of buildings and reduce the time of erection.

We constantly take charge of the production process quality. Laboratory, specialized in weld quality control and equipped with ultrasonic flaw detectors, allows us to be confident in our products.



All manufactured steel structures and elements are provided with quality certificates.

Quality Control

The company has all the necessary certificates of the National Agency of Welding Control (NAKS):

- on carrying out welding work
- on the welding equipment



Equipment

The plant is equipped with:

- welders Kemppi KM;
- welders Lincoln Flex 650;
- thermal cutting CNC machine Cometa M;
- drilling machine ZK5550 with CNC control «FAGON»;
- beveling machines ALFRA ROTOBEST;
- machines:
 - log band mills,
 - cutoff,
 - joggling,
 - milling,
 - lathe,
 - brush-drilling.
- 4 paint-spraying booths;
- ultrasonic thickness and hardness gages;
- a large number of hand tools (angle grinders, buzz saws, tuss cutter);
- diesel generator plant;
- loaders;
- frame crane with a load capacity of 10 tons.



Personnel



MORE THAN

100

WORKERS

18

TECHNICAL
AND ENGINEERING
EMPLOYEES

10

ENGINEERS
OF STEEL STRUCTURES
DETAILS

Our suppliers

TC TEM

SC Severstal Distribution

JSC EVRAZ Metall Inprom

ZAO Techno Stal

LLC A Group

GC DiPos

LLC InternetGroup

ZAO Metallocomplex-M

LLC Metallservice-Moscow

LLC Metinvest Eurasia

LLC MetInvest

LLC Mechel-Service

GC MK Promstroy metal

LLC NTPZ

ZAO Stalepromishlennaya company

LLC Stal constructsii-Proflist

LLC Revyakinskii metalloprocatnii zavod

LLC Transmetall-NN

ZAO Metallotorg

ZAO KTZ



Our objects

Medical Device Manufacturing Plant



Location:	Saint-Petersburg, Petergof, Maryino Industrial Park, lot 3
Customer:	LLC Sarstedt
Scope of works:	General Contract
Volume of steel structures:	477 tons
Total floor area:	10 000 m ²



Fruit Preparation and Storage Facility (1 stage)



Location:	Lipetsk region, Lebedyansky district, s.tsw (settlement temporary storage warehouse) Agronom, dep 1
Customer:	LLC Agronom-sad
Scope of works:	General Contract, Civil Works, On-site Networks, Landscaping
Volume of steel structures:	504 tons
Total floor area:	17 215 m ²

Агрóнóм
Саd

Automobile plant



Location:	Tula region, SEZ «Uzlovaya»
Customer:	LLC Haval Motor Manufacturing Rus
Scope of works:	General Contract
Volume of steel structures:	6 832 tons
Total floor area:	123 354 m ²

HAVAL

Distribution Center



Location:	60 Komsomolskoye shosse, Novomoskovsk, Novomoskovsk District, Tula Region
Customer:	LLC Procter & Gamble – Novomoskovsk
Scope of works:	General Design, General Contract, Technical Client
Volume of steel structures:	1 092 tons
Total floor area:	26 500 m ²



Production plant for children care goods and paper



Location:	Moscow region, Stupino district, Sitenka St., Plot 15
Customer:	LLC Kimberly-Clark
Scope of works:	General Design, General Contract
Volume of steel structures:	318 tons
Total floor area:	8 365 m ²



Décor paper plant (stage 2)



Location:	Moscow region, Chekhovsky district, industrial zone Lyutoretskoe
Customer:	LLC schattdecor
Scope of works:	General Design, General Contract
Volume of steel structures:	648 tons
Total floor area:	13 685 m ²

schattdecor

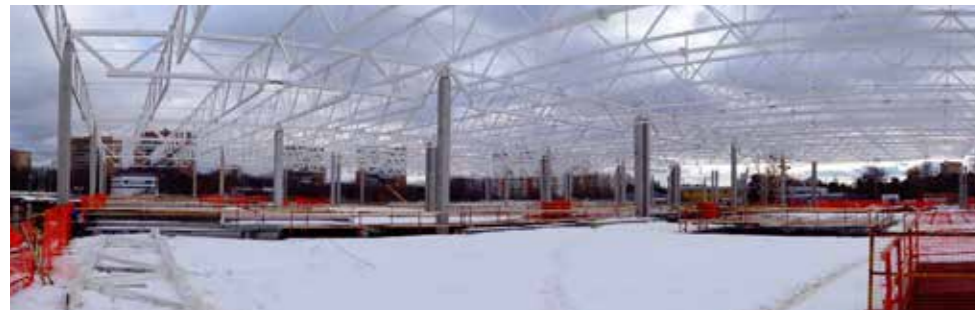
Hydro turbine equipment production plant



Location:	Saratov region, Balakovo
Customer:	LLC Voith Hydro (JSC RusHydro)
Scope of works:	Development of Detailed Design, General Contract
Volume of steel structures:	1 266,4 tons
Total floor area:	10 194 m ²

VOITH

Multi-purpose shopping center Auchan



Location:	Moscow, Proletarsky avenue, plot 30
Customer:	JSC Tsaritsino
Scope of works:	Development of Detailed Design, General Contract, Technical Client
Volume of steel structures:	1 313 tons
Total floor area:	46 850 m ²



Food Processing Plant Solntse Mexico



Location:	Moscow region, Stupino district, urban settlement Zhilevo, village Shmatovo
Customer:	ZAO Solntse Mexico (Gruma International)
Scope of works:	Development of Detailed Design, General Contract
Volume of steel structures:	836 tons
Total floor area:	14 500 m ²



Agricultural Machinery Plant CLAAS



Location:	Krasnodar region, Krasnodar, Mirniy laneway, 16
Customer:	LLC CLAAS
Scope of works:	Development of Detailed Design, General Contract, Technical Client
Volume of steel structures:	3 724 tons
Total floor area:	45 000 m ²



Furniture Factory IKEA



Location:	Novgorod region, Novgorod district, village Podberezye
Customer:	LLC IKEA Industry Novgorod
Scope of works:	General Contract
Volume of steel structures:	3 073 tons
Total floor area:	63 080 m ²



Mineral Tiles Manufacturing Plant Armstrong



Location:	Republic of Tatarstan, Special Economic Zone (SEZ) Alabuga
Customer:	LLC Armstrong Building Products
Scope of works:	Development of Detailed Design, General Contract
Volume of steel structures:	1 031 tons
Total floor area:	24 440 m ²



Transformer Production Plant Siemens (stages 1, 2)



Location:	Voronezh region, Voronezh, Industrial Park Maslovsky
Customer:	LLC Siemens Transformers
Scope of works:	Development of Detailed Design, General Contract, Technical Client
Volume of steel structures:	621 tons
Total floor area:	19 000 m ²



Stand-alone Leroy Merlin Store Building



Location:	Republic of Adygea, Takhtamukaysky district, Novaya Adygea aul, Turgenevskoye shosse, 27/1
Customer:	LLC IKEA MOS
Scope of works:	Development of Detailed Design, General Contract
Volume of steel structures:	1 052 tons
Total floor area:	19 920 m ²



Shopping and Entertainment Center Fabri



Location:	Republic of Bashkortostan, Sterlitamak
Customer:	LLC Otkrytye Investitsii
Scope of works:	Development of Detailed Design, General Contract
Volume of steel structures:	591 tons
Total floor area:	58 000 m ²



Warehouse Complex for Storage of Finished Products TM Rollton



Location:	Moscow region, Serpukhovskiy district, village Ivanovskoye
Customer:	LLC Mareven Food Central
Scope of works:	Development of Detailed Design, General Contract, Technical Client
Volume of steel structures:	750 tons
Total floor area:	20 397 m ²

Mareven

Raw Materials Warehouse of the Manufacturing Plant for Childcare Goods and Paper Products



Location:	Moscow region, Stupino, Sitenka St., Plot 15
Customer:	LLC Kimberly-Clark
Scope of works:	General Design, General Contract
Volume of steel structures:	433 tons
Total floor area:	14 000 m ²

 **Kimberly-Clark**

Gyproc Plasterboard Plant



Location:	Nizhny Novgorod region, Pavlovsky district, Gomzovo village
Customer:	LLC Saint-Gobain Construction Products Rus
Scope of works:	General Design, General Contract, Expertise Support
Volume of steel structures:	1 400 tons
Total floor area:	26 500 m ²



Energy Technology Center



Location:	Kaluga region, Kaluga, Technology park Rosva
Customer:	LLC GE Rus
Scope of works:	Development of Detailed Design, General Contract
Total floor area:	4 500 m ²



Automotive Fuel Tank Production Plant



Location:	Kaluga region, Kaluga, Industrial Park Grabtsevo
Customer:	LLC YAPP Automotive systems
Scope of works:	General Contract
Volume of steel structures:	320 tons
Total floor area:	6 700 m ²



Automotive Components Production Plant



Location:	Kaluga region, Kaluga, Industrial Park Grabtsevo
Customer:	CJSC MAGNA Technoplast
Scope of works:	Development of Detailed Design, General Contract, Technical Client
Volume of steel structures:	700 tons
Total floor area:	14 500 m ²



Logistic Center Class "A" (stage 2)



Location:	Nizhny Novgorod region, Kstovo district, Zhdanovsky village
Customer:	LLC Alidi Nedvizhimost
Scope of works:	General Design, General Contract, Technical Client
Volume of steel structures:	1 142 tons
Total floor area:	22 790 m ²



Regional Distribution Center



Location:	Perm region, Dvurechenskiy rural settlement, Nestyukovo village
Customer:	JSC Tander
Scope of works:	General Design, General Contract, Technical Client
Volume of steel structures:	2 093 tons
Total floor area:	51 000 m ²



Regional Distribution Center



Contacts

Dmitry Inkin

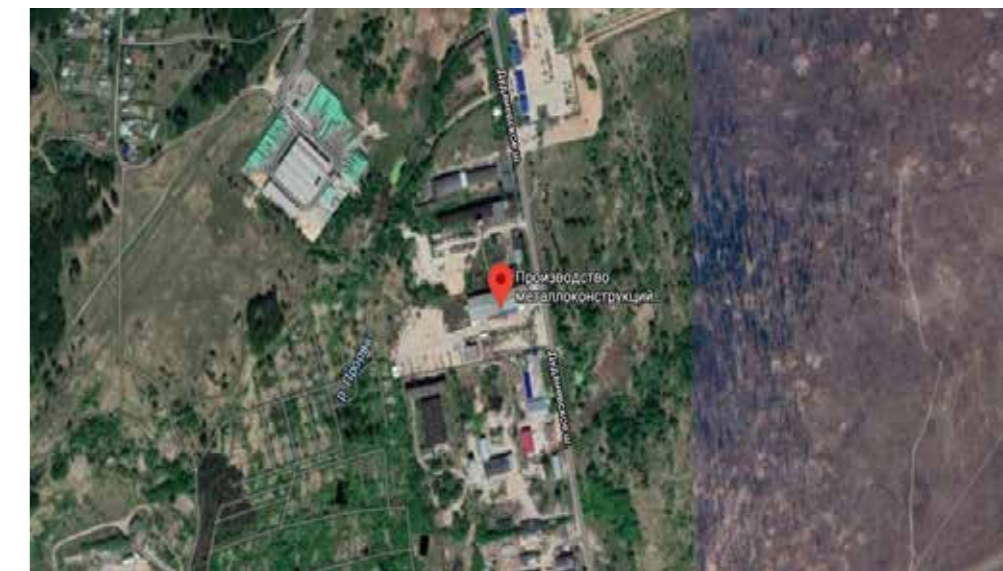
Sales Manager SS
inkin.d@mimpress.ru
+7 930 697 21 11

Ivan Evdokimov

Production Manager SS
evdokimov.i@mimpress.ru
+7 920 254 75 55

The plant is located in:

Dudenevskoe highway 9a, Bogorodsk city,
Nizhny Novgorod region.



Location:	Moscow region, Kolomensky district, Parfentevo village
Customer:	JSC Tander
Scope of works:	General Design, General Contract, Technical Client
Volume of steel structures:	1 967 tons
Total floor area:	84 160 m ²

